

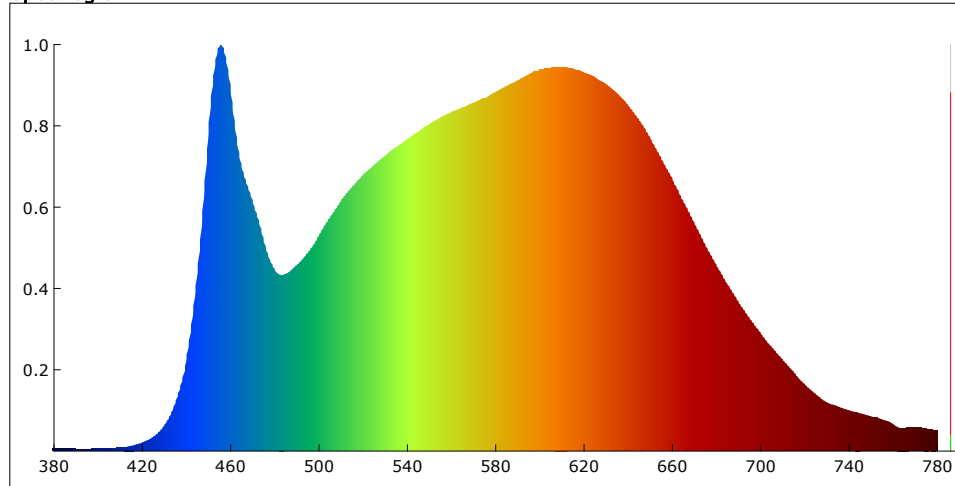
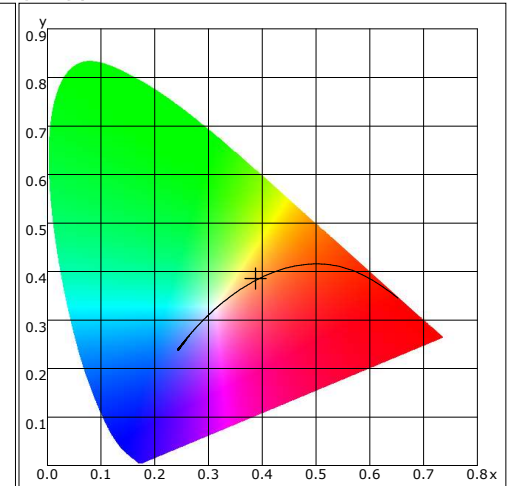
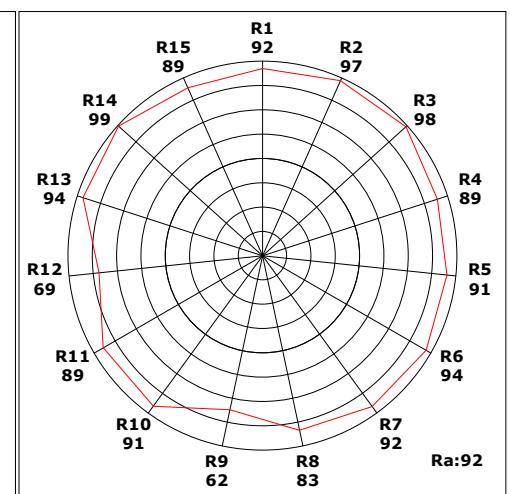
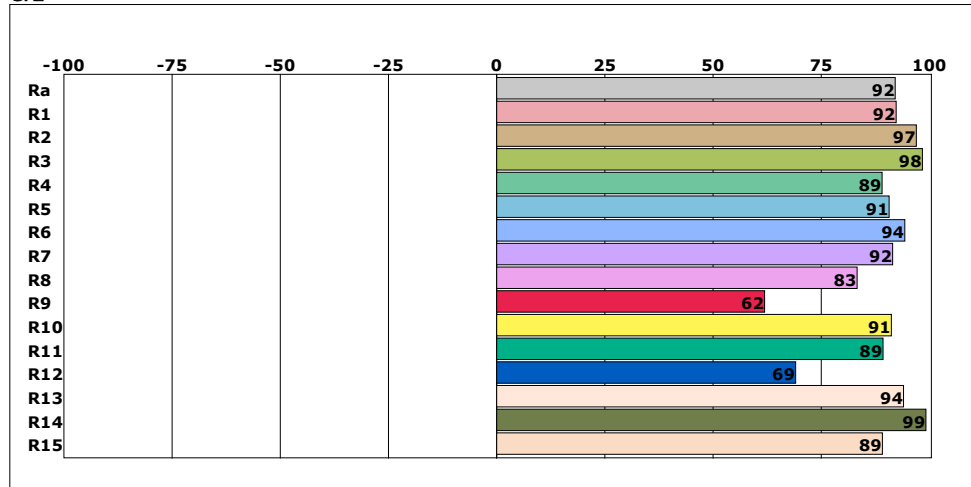
Product Mark

Model: Plafond 380 pinta
Temperature: 20□
Tester: LedStore.fi

Manufacture: LedStore.fi
Humidity: 65%
Test Date: 2018-08-01

Parameter

Name	Value	Name	Value	Name	Value
E(lx)	21412.01	Ra	92.2	Bink Freq(Hz)	-
CCT(K)	3875	S/P	1.8	Fluctuate Depth	-
Duv	0.0018	X	31549.4	Bink Percent	-
CIE(x,y)	0.3876, 0.3851	Y	31349.9	Bink Exponent	-
CIE(u,v)	0.2264, 0.3375	Z	18503.6	PAR(W/m2)	-
Dominant Wave(nm)	578.6	Rf	-	PPFD(umol/m2/s)	-
Purity	31.9%	Rg	-	YPFD(umol/m2/s)	-
Color Ratio(RGB)	19.9% 77.2% 2.9%	Ebh(mW/m2)	-	Ep(W/m2)	-
Peak Wave(nm)	455.6			Eb(W/m2)	-
Half Width(nm)	29.7			Ey(W/m2)	-
Candle E(fc)	1989.96			Er(W/m2)	-
Ee(W/m2)	72.528			Erb Ratio	

Spectrogram**CIE1931****CRI****Instrument Status**

Type: LMS-6000
VDark: 2584

Integral Time: 9.000ms
Scan Range: 380-780nm

VPeak: 57806
SN: 0

Remark: