

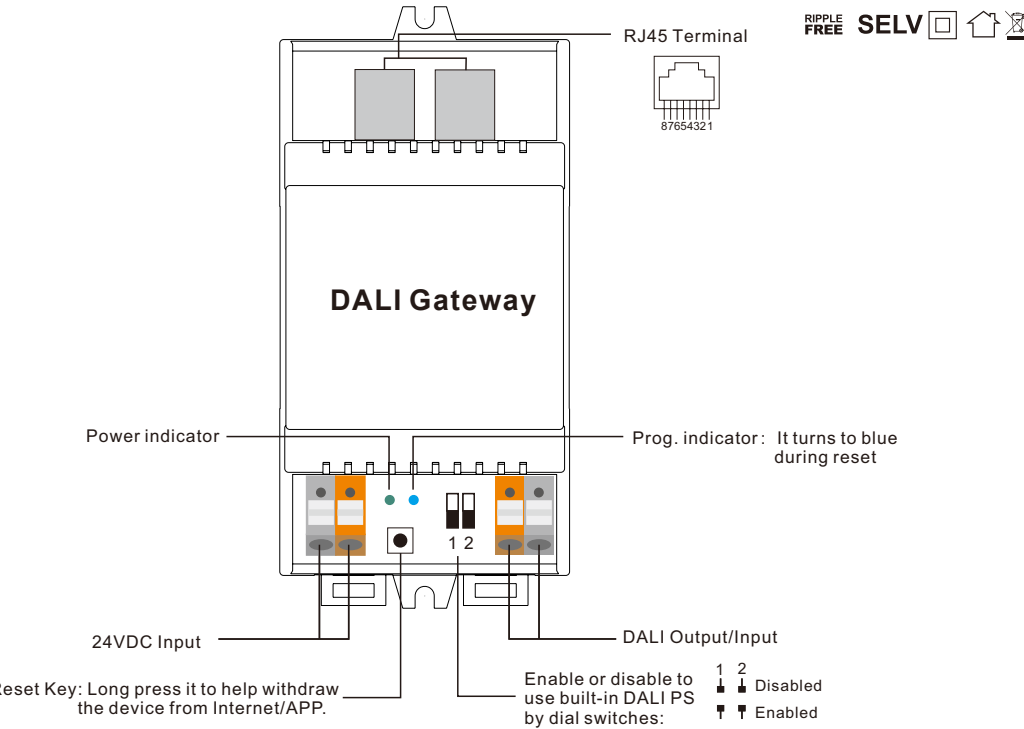
DIN Rail Ethernet (IP) DALI Gateway

DALI-GATEWAY



Important: Read All Instructions Prior to Installation

Function introduction



Product Data

While built-in DALI PS enabled

Input Voltage	Number of DALI Channel	Output Voltage	Output Current	Size(LxWxH)	Ambient Temperature
24VDC	1	12-22.5VDC	250mA max	110x53x65mm	-20°C ~ +50°C

While built-in DALI PS disabled

Input Voltage	Number of DALI Channel	DALI Current Consumption	Size(LxWxH)	Ambient Temperature
24VDC	1	Max. 2mA	110x53x65mm	-20°C ~ +50°C

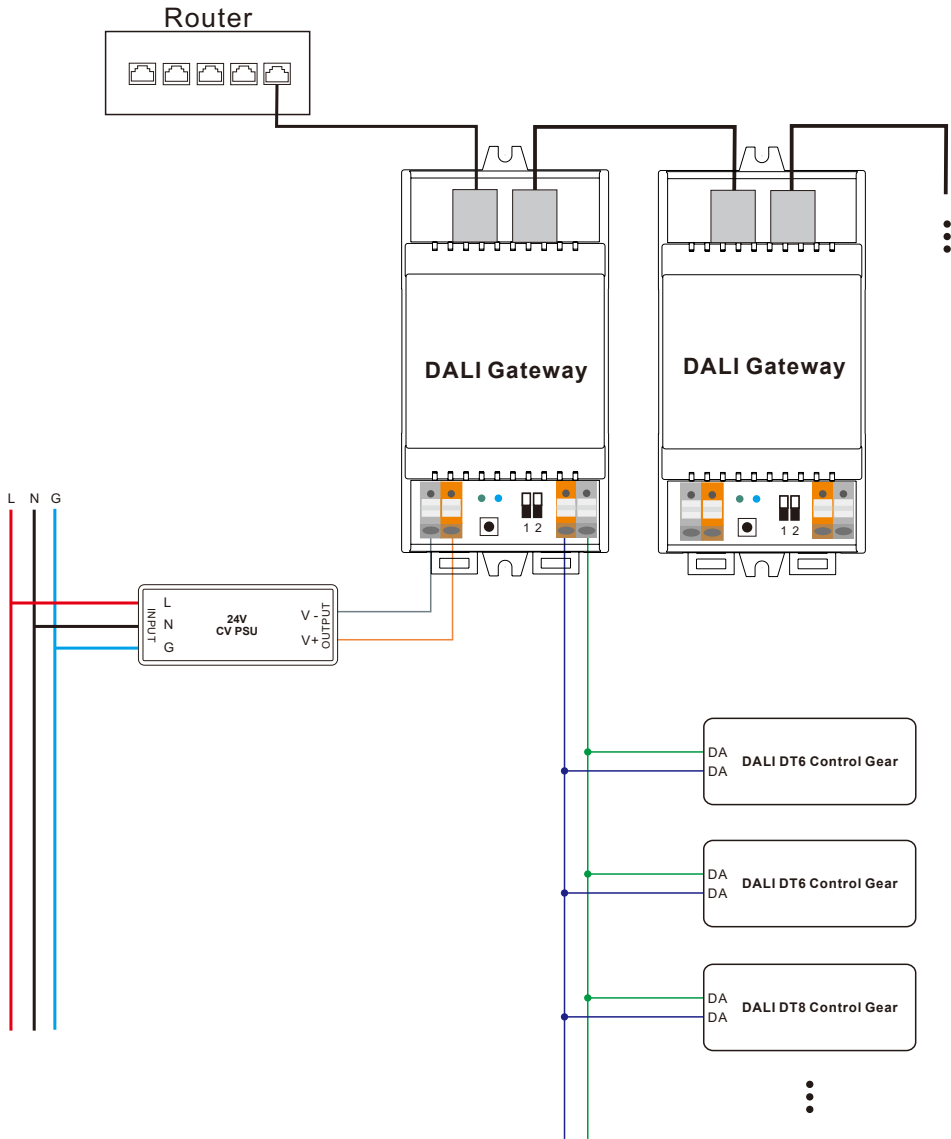
Safety & Warnings

- DO NOT install with power applied to device.
- DO NOT expose the device to moisture.
- Supports **DT6, DT8 Tc, DT8 XY, DT8 RGBWA device types**
- Supports addressing, grouping and scene configuration for **max. 64 control gears (DALI-1 and DALI-2)**
- **Built-in 250mA DALI PS**, no extra wiring required
- Easy connect to a network through Ethernet connection
- Easy & quick configuration through the mobile application

- Built-in battery, **built-in RTC**, supports timer task configuration
- Supports **cycle schedule configuration**, **Circadian rhythm function** is enabled
- Waterproof grade: IP20
- 5 years warranty

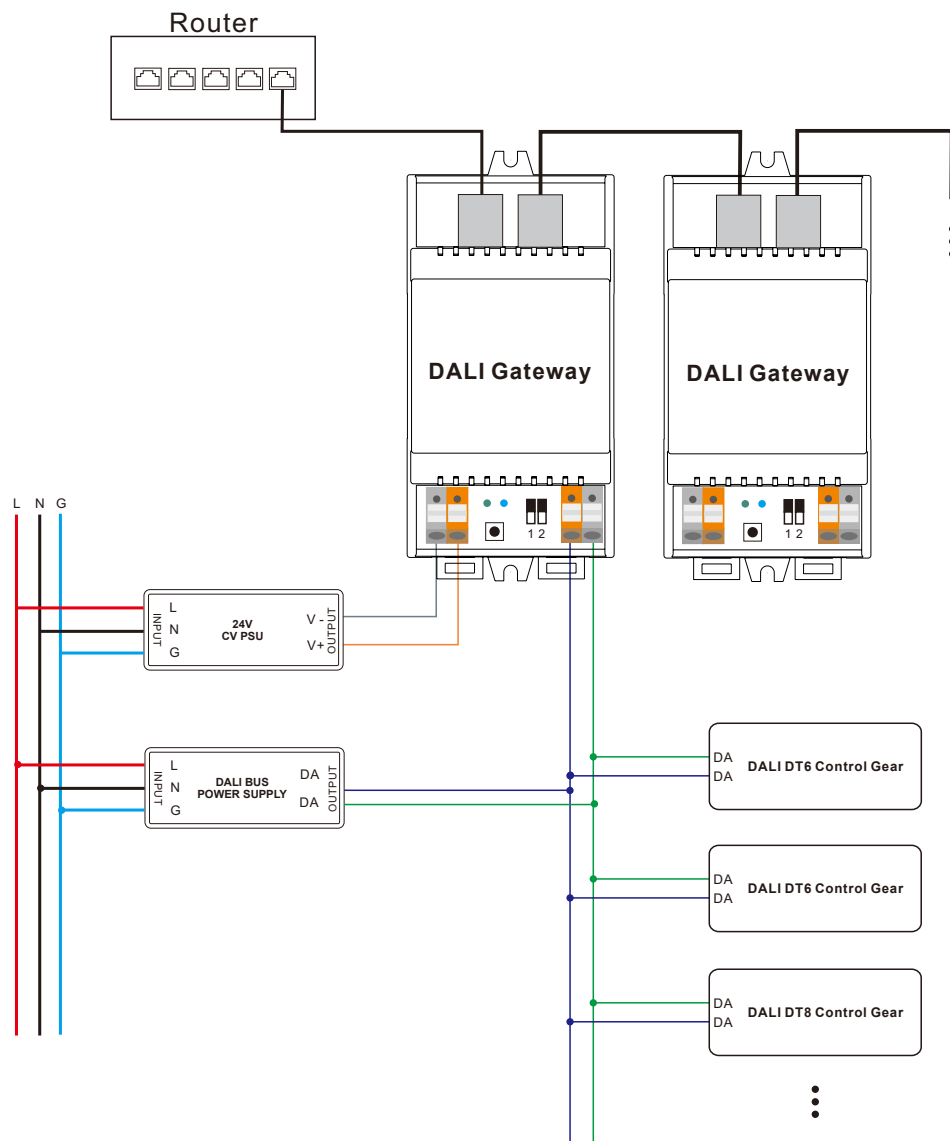
Wiring Diagram

1) While built-in DALI PS enabled



Note: When built-in DALI Bus PS is enabled, a DALI gateway can supports up to 64 control gears.

2) While built-in DALI PS disabled



Note: When built-in DALI Bus PS is disabled, the number of following control gears depends on external DALI PS.

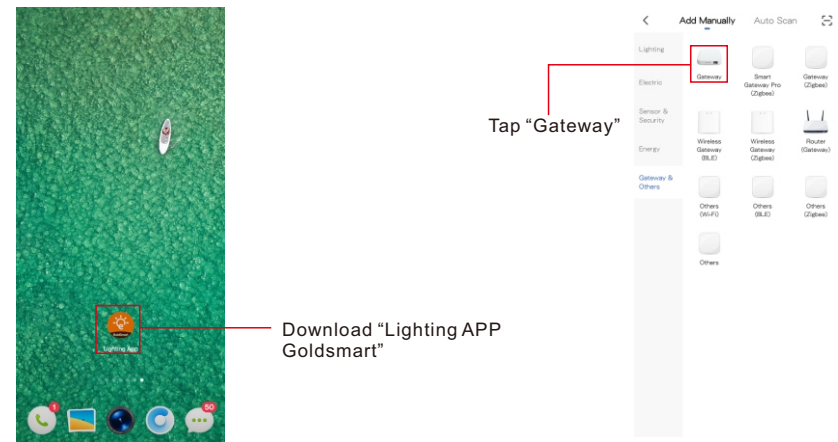
Operation

1) Do wiring according to the wiring diagram and power on the DALI system.

2) Pair the DALI gateway to the network and control it through the APP:

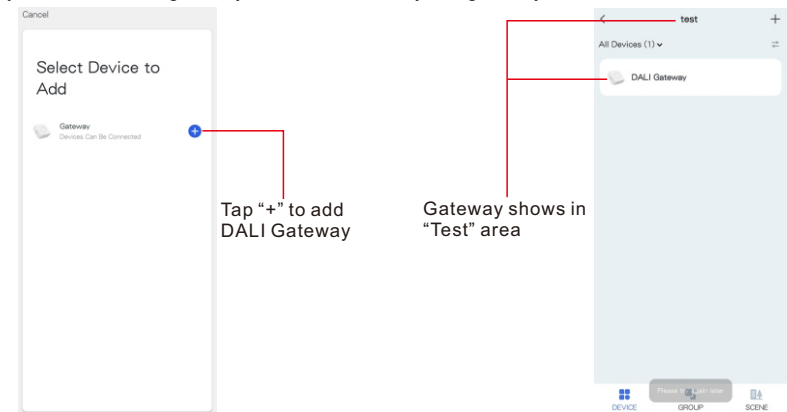
Working with “The Lighting APP Goldsmart”

Step 1: Download the APP (searching “Lighting APP Goldsmart”) from App Store and Google Play) and set up an account. Then open the APP and add the gateway to the network.

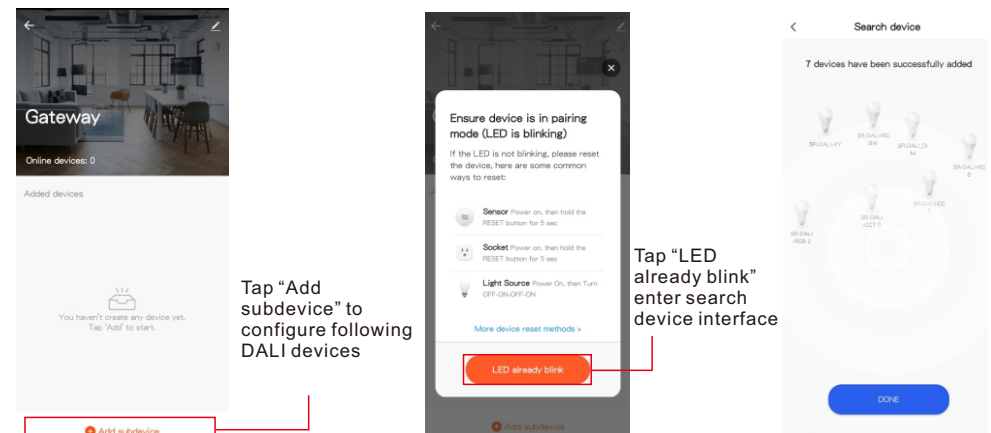


- Note:**
1. Please make sure the following DALI devices is connected with the gateway.
 2. Create an area before adding gateway.
 3. Make sure that the WIFI network of mobile phone is in the same network as DALI gateway.

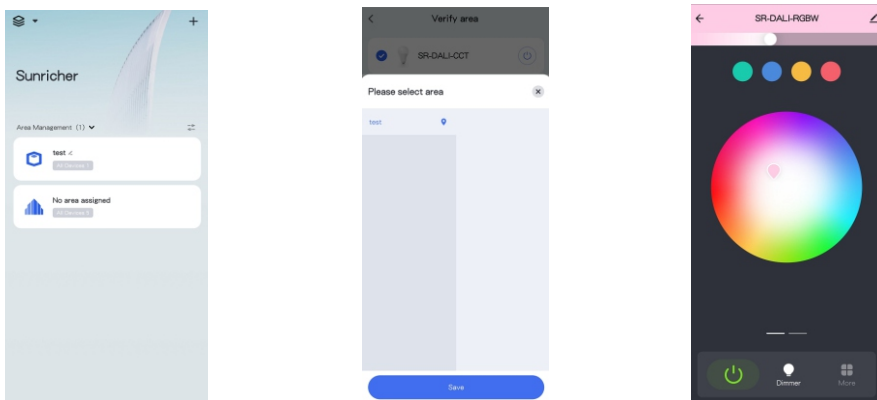
Step 2: Power on the gateway and add it manually, the gateway will be found.



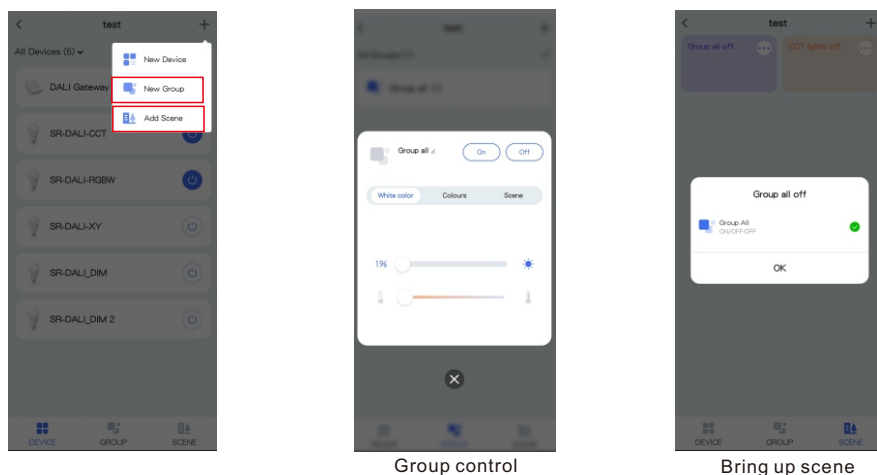
Step 3: The gateway was added successfully, then select the gateway to configure the following DALI devices.



Step 4: All devices have been found, then add it to a certain area, and click the device name into control page.



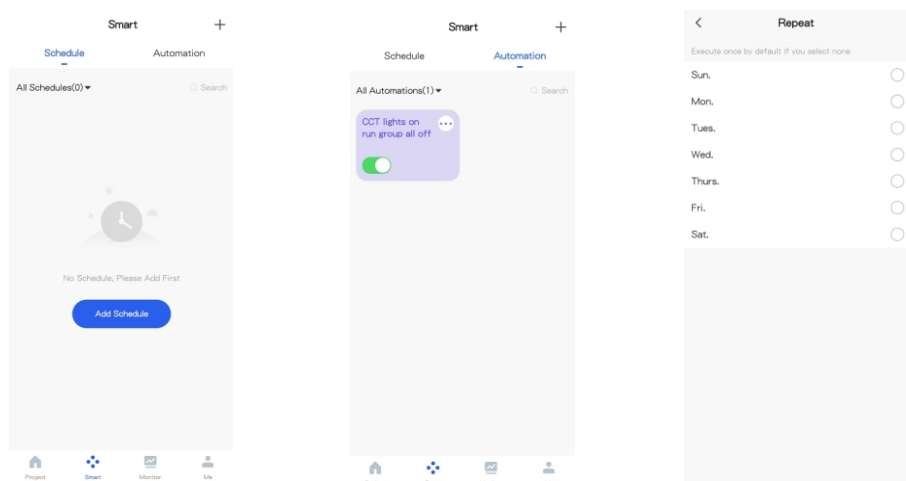
Step 5: Add new group for those devices, add new scene settings for certain groups or devices.



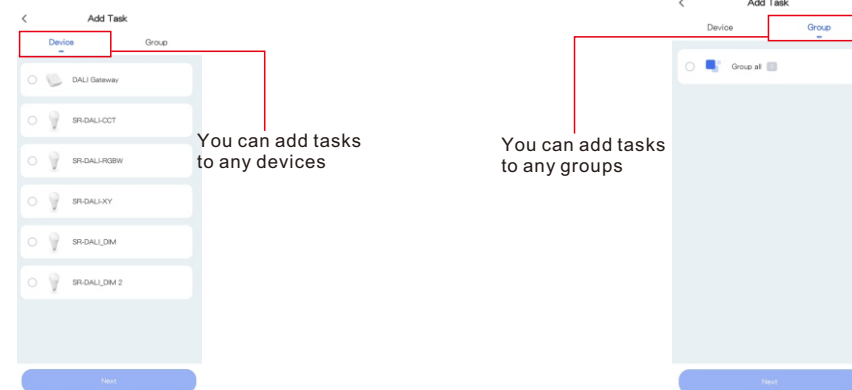
Group control

Bring up scene

Step 6: Schedule setting, you can add schedules to listing devices. It can be set from Monday to Sunday



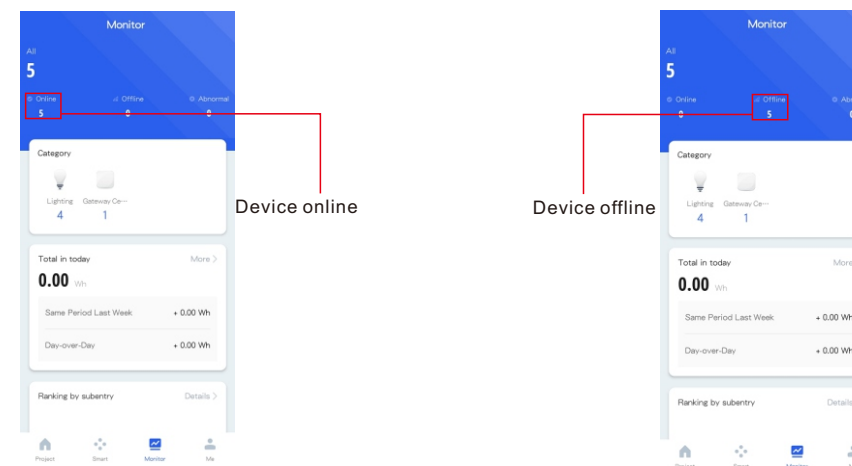
Step 7: Task setting, you can add tasks with any devices or groups, and run previous scene settings



You can add tasks to any devices

You can add tasks to any groups

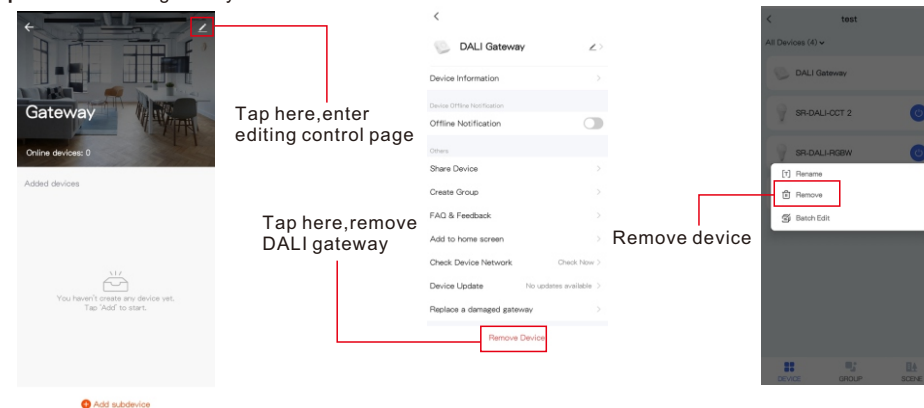
Step 8: Monitor interface, where you can view the status and power consumption chart of the devices.



Device online

Device offline

Step 9: Remove the gateway or DALI devices from the APP interface.



Tap here, enter editing control page

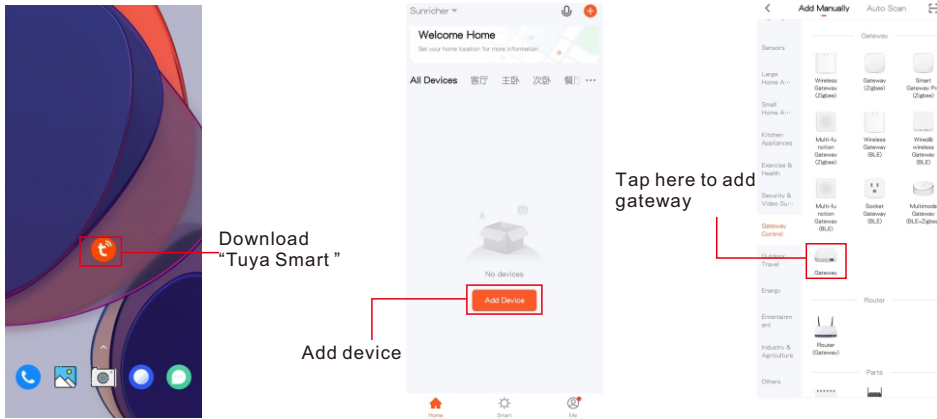
Tap here, remove DALI gateway

Remove device

Note: 1. If the light control interface cannot be opened, please search and add devices again in DALI gateway interface.
2. For more information please contact with us.
3. Ensure that the APP currently in use is the latest version.

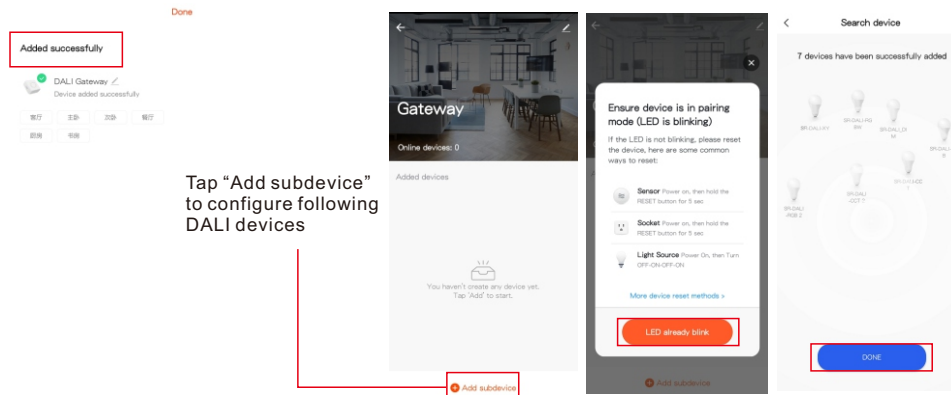
Working with “Tuya Smart” APP

Step 1: Download the APP (searching “Tuya Smart” from App Store and Google Play) and set up an account. Then open the APP and add the gateway to the network.

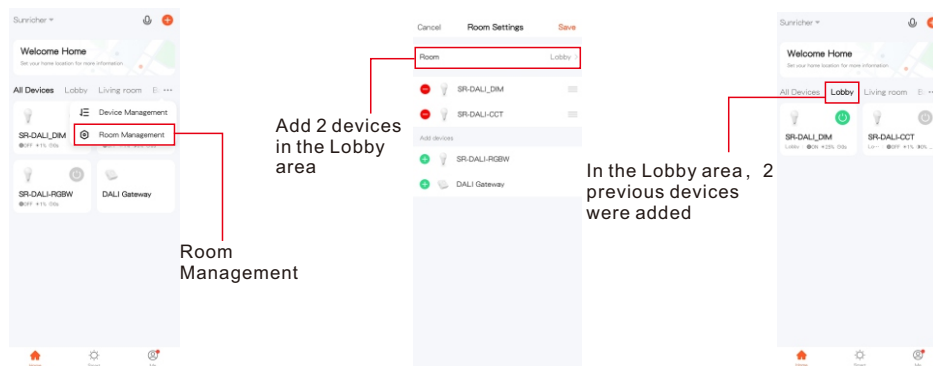


- Note:**
1. Please make sure the following DALI devices is connected with the gateway.
 2. Create an area before adding gateway.
 3. Make sure that the WIFI network of mobile phone is in the same network as DALI gateway.

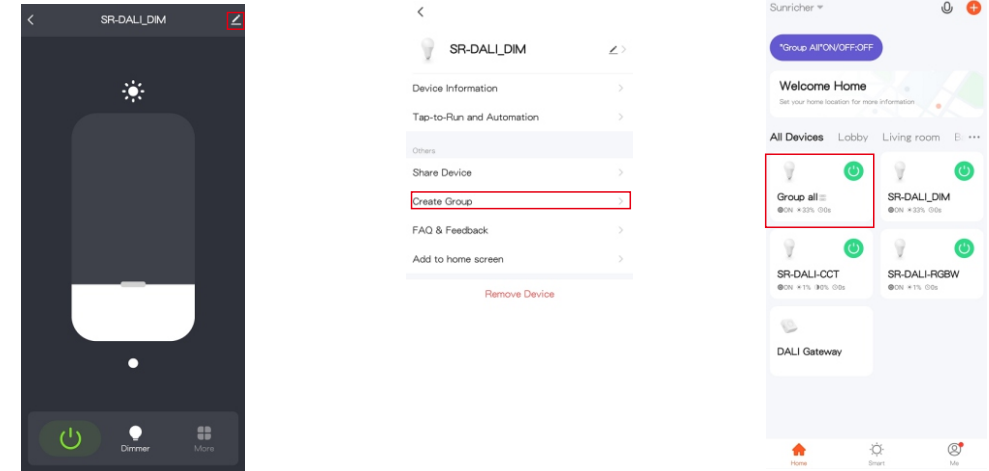
Step 2: The gateway was added successfully, then select the gateway to configure the following DALI devices.



Step 3: All devices have been found, then add it to a certain area.

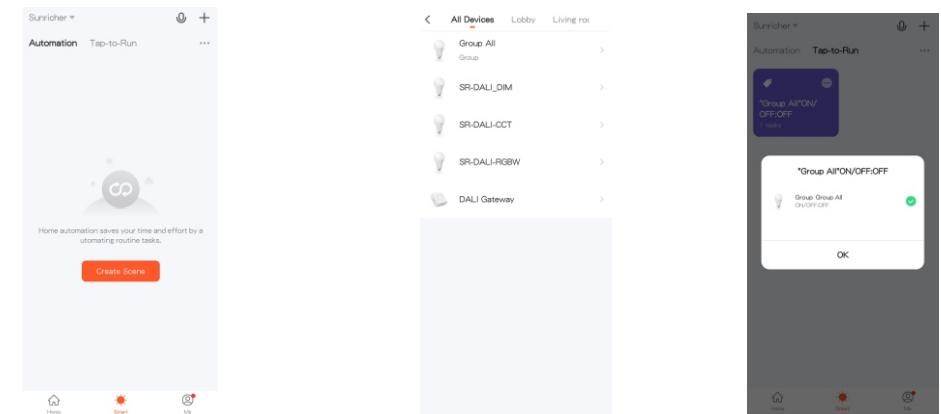


Step 4: Click the device into control page, and click "🔌" to create a group.



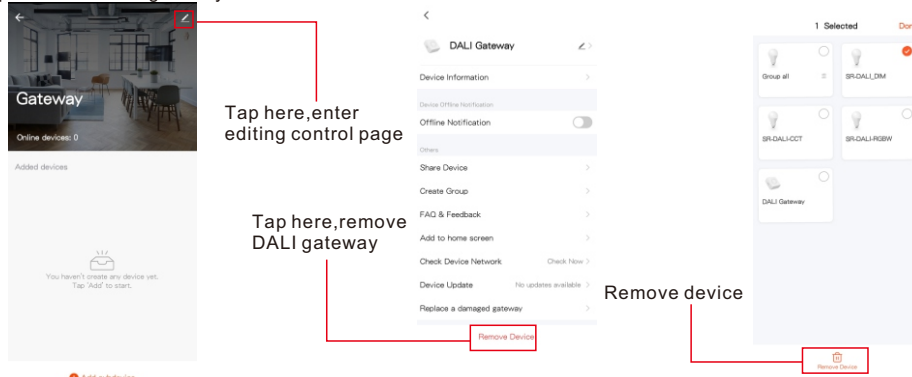
Note: 1. For group control, only ON/OFF and brightness level are supported now.

Step 5: Enter "Smart" page, creat a scene for certain devices or group.



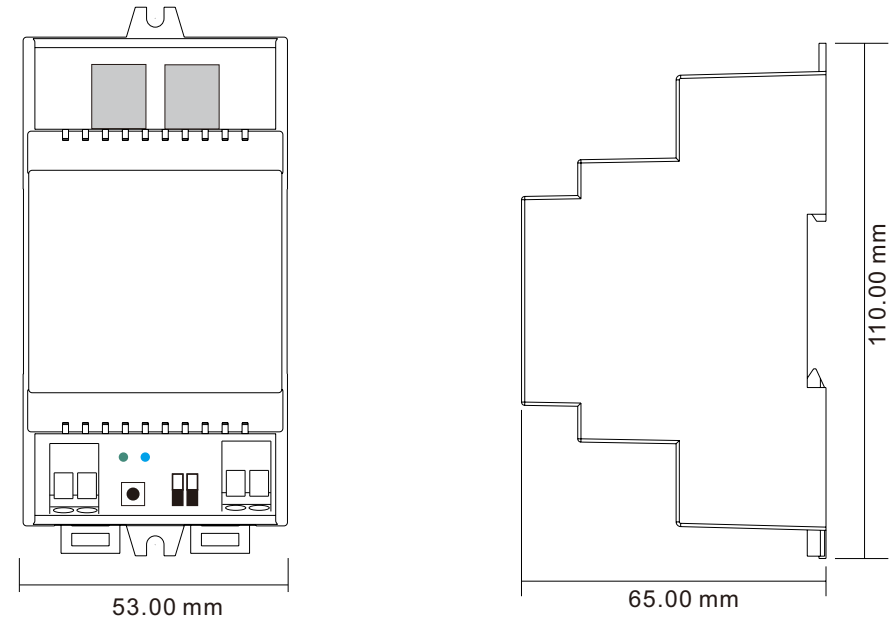
Reference: Click "Creat Scene", then tap "Launch Tap-to-Run" enter next page, select "Run the device", then you can choose any devices or group(s) to run a scene.

Step 6. Remove the gateway or DALI devices from the APP interface.

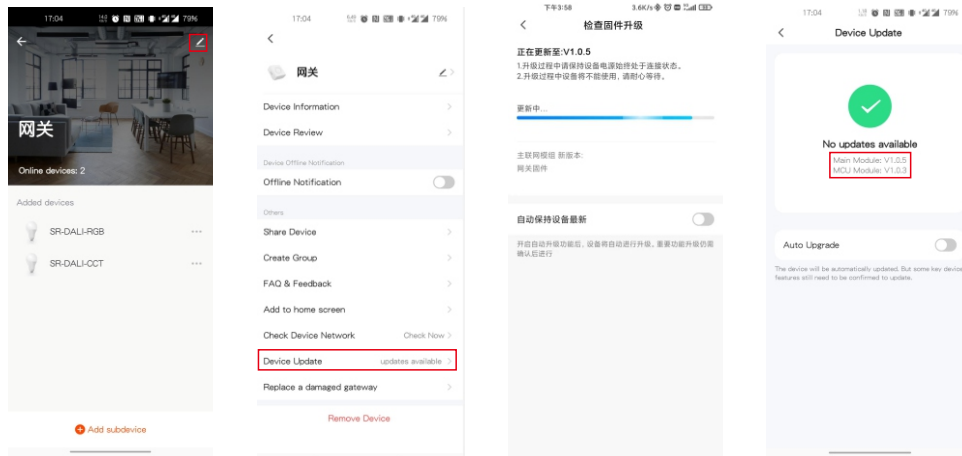


- Note:** 1. If the light control interface cannot be opened, please search and add devices again in DALI gateway interface.
 2. For more information please refer " **TUYA Smart User manual** ".
 3. Ensure that the APP currently in use is the latest version.

Product Dimension



OTAU Instruction



You can update the latest firmware manually.

Tips

1. Working with Universal DALI control gears (Both for DALI-1 and DALI-2)
2. Better performance with SUNRICHER DALI devices
3. Broadcasting is supported with DALI input devices (careful with DALI bus power)

Update log

Date	Version	Update content	Update by
2023-5-5	V1.3	APP Update	Romeo

Note: Subject to change without notice. Please contact us if you have any questions.

Lamppukauppa Led Store Oy
 Mesikukantie 16
 01300 VANTAA
 myynti@ledstore.fi
 WWW.LEDSTORE.FI

